

Guarantee

This product is guaranteed against faulty materials and manufacture as follows:

- 5 years full warranty on the main shower valve
- 1 year full warranty on all other ancillary parts – including shower head, riser rail (including rail end caps and height adjuster), shower hose, hose retainer ring and soap dish.

Gainsborough Standard Guarantee

Gainsborough Showers guarantee this product against all mechanical defects arising from faulty workmanship or materials for domestic use only, from the date of purchase, provided that it has been installed by a competent person in full accordance with the fitting instructions. Any part found to be defective during this guarantee period we undertake to repair or replace at our option without charge so long as it has been properly maintained and operated in accordance with the operating instructions, and has not been subject to misuse or damage. This product must not be taken apart, modified or repaired except by a person authorised by Gainsborough Showers. Please retain your proof of purchase for inspection in the event of a claim during the guarantee period.

This guarantee applies only to products installed within the United Kingdom and does not apply to products used commercially. This guarantee does not affect your statutory rights.

What is not covered:

- 1 Breakdown due to:
 - a) use other than domestic use by you or your resident family;
 - b) wilful act or neglect;
 - c) any malfunction resulting from the incorrect use or quality of water or incorrect setting of controls;
 - d) faulty installation.
- 2 Repair costs for damage caused by foreign objects or substances.
- 3 Total loss of the product due to non-availability of parts.
- 4 Compensation for loss of use of the product or consequential loss of any kind.
- 5 Call out charges where no fault has been found with the appliance.
- 6 The cost of repair or replacement of showerheads, hoses, riser rails and/or wall brackets or any other accessories installed at the same time.
- 7 The cost of routine maintenance, adjustments, overhaul modifications or loss or damage arising therefrom, including the cost of repairing damage, breakdown, malfunction caused by corrosion, furring, pipe scaling, limescale, system debris or frost.

TECHNICAL HELPLINE. 01959 560760

Gainsborough Bathroom Products Ltd.

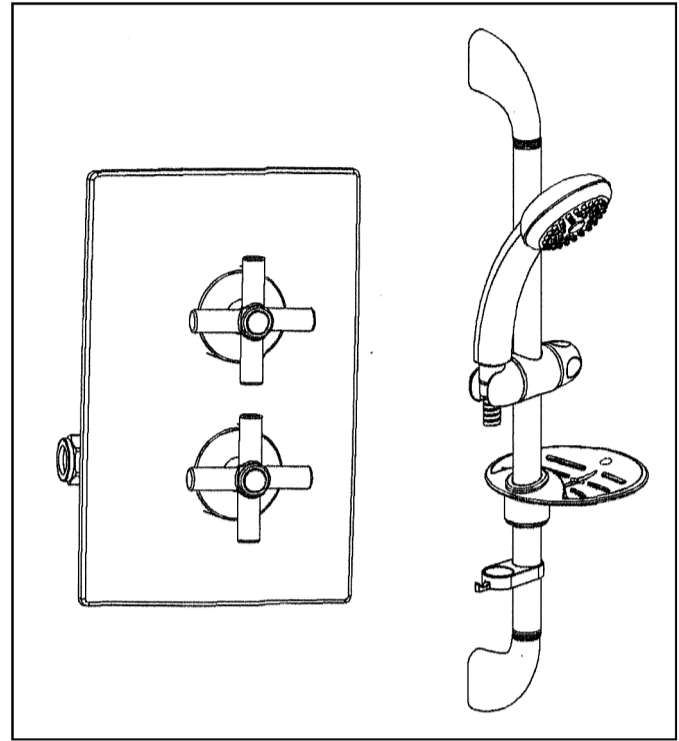
Customer Services Department

The Flyers Way

Westerham, TN16 1DE.

www.gainsboroughshowers.co.uk

Dual Control Concealed Thermostatic Shower Mixer With Shower Kit Installation & Maintenance Instructions. **Gainsborough TT07**



IMPORTANT

This product must be fitted in accordance with the latest Water Regulations Guide which include the Water By Laws 2000 (Scotland). Please retain this instruction leaflet for future reference to ensure optimum shower valve performance.

cod. 00851335

HIGH PRESSURE SYSTEMS.

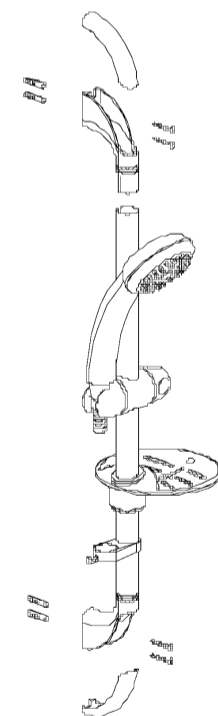
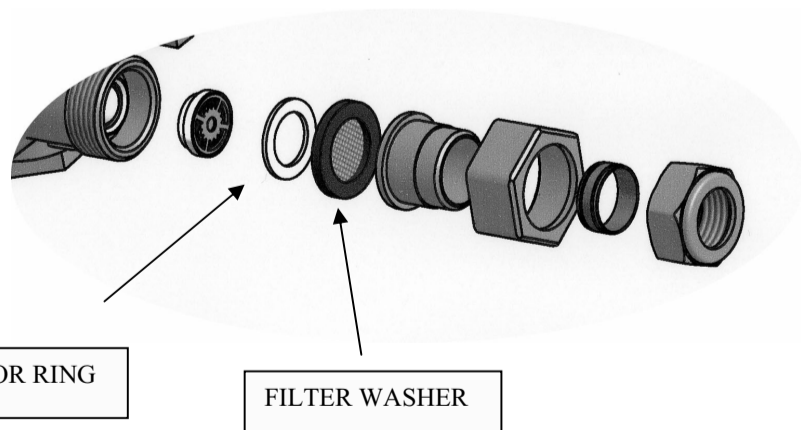
This mixer is suitable for high and low pressure systems.

When being installed to high pressure supplies, water flow regulators may be used (supplied) in order to reduce water consumption.

These are recommended for use with pressures over 1bar.

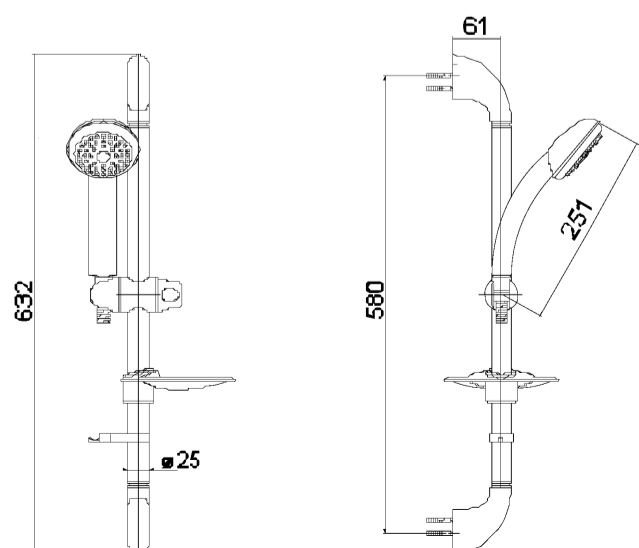
These are fitted into the Mixers inlets as follows:

1. Remove the connector assembly, which will expose the filter washer, connector ring and spacer ring.
2. Remove all the above then the flow restrictor should be fitted into the mixer inlet. Push the flow reducer into the inlet until it stops.
3. Re-fit the connector using the components shown in the picture below (DO NOT RE-FIT THE SPACER RING) and re-connect the connector assembly to the mixer inlet.



SHOWER KIT INSTALLATION

Position brackets in the desired position and mark drill hole, suitable for the intended wall plugs. Once wall plugs have been inserted connect rail to the fixing brackets and secure using the screws provided. Replace the clip-on bracket covers to complete the installation.



Installation.

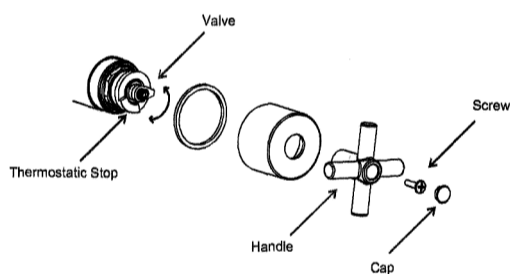
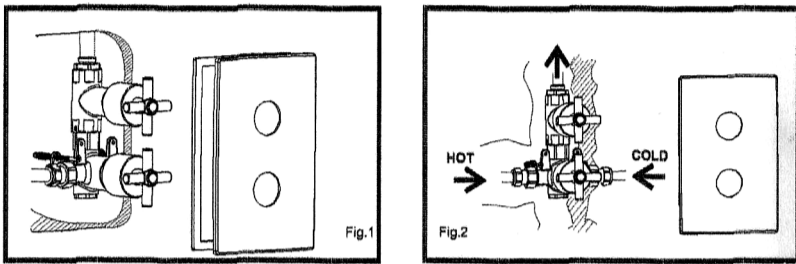
This product must be fitted in accordance with the Water Byelaw Regulations.

IMPORTANT. Flush pipework prior to fitting the mixer. Do not allow dirt or metal particles to block the water inlets, once the pipes have been flushed, turn off the water.

We recommend the fitting of Full Flow ball type isolation valves to assist should any maintenance work be required.

FITTING

1. Install the pipework up to the shower area and ensure that it has been flushed.
2. Ensure that the hot supply is to the left of the mixer, marked H on the mixer body when looking at the mixer from the front.
3. Prepare the hole into which the mixer will be fitted. See **TECHNICAL DRAWINGS for the Cavity Depth.**
4. Mark the position for the screw holes, drill the holes, push in the plugs and screw the mixer to the wall.
5. Connect all pipe work and test for leaks.
6. Make good the concealing hole.
7. Turn off the water.
8. If the handles are fitted to the mixer remove them by taking off the handle cover caps, removing the screws and pulling off the handles.
9. Remove the valve cover shrouds.
10. Place the wall plate over the valve and hold it in place by re-fitting the valve cover shrouds.
11. Replace the handles, handle screws and cover caps.



Hot Water Supply.

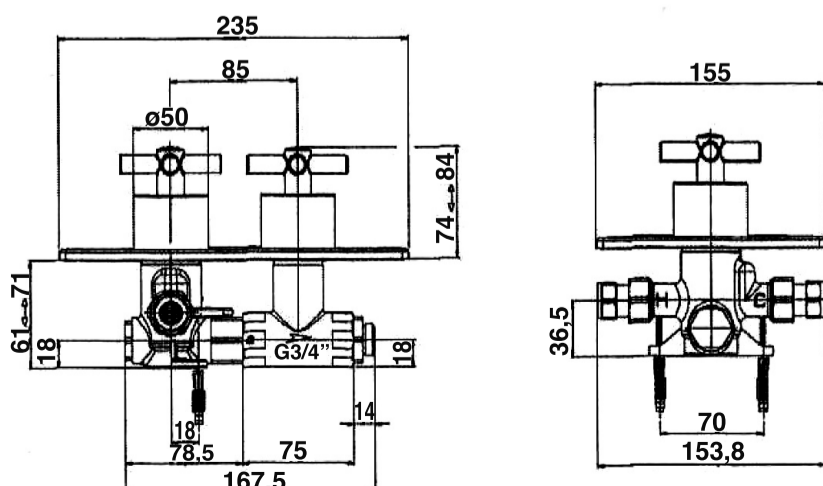
This mixer is suitable for any water heating system

In the case of Combination Boilers, the appliance must have a minimum domestic hot water rating of 24kW (80,000BTU) and be of the type fitted with a fully modulating gas valve.

If in any doubt, please contact the appliance manufacturer before installation commences.

PLEASE NOTE: DUE TO PERFORMANCE CHARACTERISTICS OF COMBINATION BOILERS, THE SHOWER FLOW RATE MAY VARY WITH CHANGES TO THE COLD WATER MAINS INLET TEMPERATURE.

Technical Drawing.



Specification.

Hot Water Supply: Recommended: 60-65C

Operating Pressure: Min: 0.1bar – Max: 5bar
Recommended: 0.3 – 5bar

IMPORTANT:

A 10C DIFFERENCE MUST BE MAINTAINED BETWEEN SYSTEM HOT WATER TEMPERATURE AND THE MIXERS MAXIMUM HOT WATER TEMPERATURE.

Hot and Cold water pressures supplying this mixer must be balanced and from a common source.

Should the water pressure be higher than 5bar fit a pressure reducing valve before the mixer. (Not supplied).

Aftercare Instructions.

Whilst modern plating techniques have been used in the finishing of this product the surfaces will suffer if not cleaned correctly.

Clean this product with a soft cloth and clean water.

The product must not be cleaned or come into contact with any abrasive agents or materials.

If this occurs the guarantee will be invalid.

